

## *“By far the most memorable cocktail and dining venue in Davos”*

The Exploration Train is coming back during WEF'26, stationed five minutes walk from Davos Platz station.

It operates as a fundraising venue to finance multiple Wisdom Foundation nonprofit initiatives – including those listed below, which take place in Davos thorough the year (concept note: [tiny.cc/WisdomFoundation](http://tiny.cc/WisdomFoundation)):

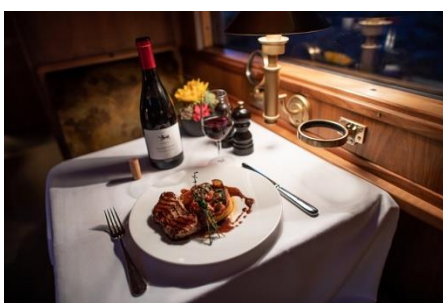
[WisdomAccelerator.org](http://WisdomAccelerator.org)

[WisdomHouseDavos.org](http://WisdomHouseDavos.org)

[ExplorationFilmFestival.org](http://ExplorationFilmFestival.org)

[ExplorersWeekend.org](http://ExplorersWeekend.org)

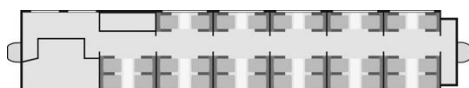
- Our **Restaurant Wagon** caters to up to 30 guests offering gourmet meals with local ingredients.
- Our **Piano Bar Wagon** comfortably welcomes 30 guests in a relaxed atmosphere and can also be setup as a recording studio for media interviews etc. Journalists/academia benefit from a reduced donation rate.
- Our tentative operating hours during WEF'26: Monday 19<sup>th</sup> to Thursday 22<sup>nd</sup> January 08:00 – 00:00 and event slots have a two hours minimum. The wagons can be rented separately or combined.
- Food/drink prices are standard for Switzerland, however a set donation per hour of venue use is mandatory to cover our charter costs and to support the initiatives mentioned above.
- There are also **two Passenger Wagons** (the red ones) with a standard seating configuration which can be used for private bilateral meetings. This brings our total hosting capacity to 150+ guests simultaneously.



Restaurant Wagon



Piano Bar Wagon



For more details, please contact:

Marcelo Garcia; +41 79 329 7926; [marcelo@wisdomaccelerator.org](mailto:marcelo@wisdomaccelerator.org); [linkedin.com/in/marcelogarcia](https://www.linkedin.com/in/marcelogarcia)